

# Head Protection



## Helmets



**MK1 - HDPE**  
CODE: **AHA010**



This lightweight helmet combines safety with economy and is designed for basic general use.

- Shell manufactured from UV stabilised high density Polyethylene
- Light and comfortable to wear
- Polythene harness
- Helmet offers 440v electrical insulation
- Integral rain channel for greater comfort in poor weather
- Slip ratchet adjustable headband
- Conforms to EN 397, ANSI Z89



### **EVO2® Vented, Standard Peak, One Touch™ Slip Ratchet (EN397 & ANSI/ISEA Z89.1 Type 1)**

CODE: **AJF030-000-\*00**



EVO2® features a traditional 6-point polyethylene harness and OneTouch™ slip ratchet. The EVO2® offers the most economical top level protection.

#### **Cross Conformity**

The EVO3® & EVO2® safety helmet both meet the European EN397 industrial head protection standard as well as the US ANSI/ISEA Z89.1 Type 1 standard required and provides optimum performance in today's advanced environment.

#### **Electrical Insulation**

Meets the EN 50365 Class 0 10KV standard. This standard is applicable to electrically insulated helmets used for working live or close to live parts on installations not exceeding 1000Vac or 1500Vdc. The EVO2® safety helmet meets ANSI/ISEA Z89.1 Type 1 Class E



# Head Protection



OXFORD, ENGLAND



## EVO3® Vented, Standard Peak, Revolution™ Wheel Ratchet (EN397 & ANSI/ISEA Z89.1 Type 1)

CODE: **AJF170-000-\*00**

The EVO3® Comfort Plus™ helmet combines a super strong shell for superior all day protection in the widest range of environments. EVO3® is a true evolution of the long established MK2® and MK3® helmets, which were first launched in the 1970's, the EVO3® retains the JSP signature styling while incorporating developments first seen in the EVO8®.

### Electrical Insulation

Meets the EN 50365 Class 0 10KV standard. This standard is applicable to electrically insulated helmets used for working live or close to live parts on installations not exceeding 1000Vac or 1500Vdc. The un-vented version of this safety helmet meets ANSI/ISEA Z89.1 Class E



**All attachments featured below fit EVO2 and EVO3**

## Helmet Attachments

### VISOR

CODE: **ANK060-230-000**

Helmet Visor and Carrier



### EVOSpec® Clear - Polycarbonate

CODE: **ANT010-200-000**

Easy assembly kit for adding a clear, polycarbonate, retractable eyeshield to an existing EVOLite® / EVO3®;8482; helmet. Conforms to EN166.1.F

### 4 Point Linesman Harness

CODE: **AVH200-000-000**

Ideal for working at height. A 4-point chin strap harness that fits the EVOLite® & EVO3® Safety Helmets Conforms to EN397 & EN50365, ANSI Z89

# Head Protection



OXFORD, ENGLAND

## Helmet Attachments

FITS  
EVO2 & EVO3  
HELMETS

### InterGP™ Helmet mounted Ear Defenders compatible with MK7® & EVO® Range

CODE: **AEK010-005-300**

The InterGP™ are helmet mounted ear defenders designed for general purpose use. They are part of the new range of helmet mounted ear defenders from JSP.

#### Features and Benefits

International slot compatibility means the InterGP™ fits the complete range of JSP Safety Helmets, and are even compatible with the JSP Surefit™ visor system. Easy to attach and detach with spring loaded arms that give an excellent fit to the ear. The steel arms maintain a constant and even pressure, whether hot or cold conditions, no matter how long user wears the cups for. When not in use the arms allow the cups to stand off clearly from the head. Conforms to EN 352-3.

- Universal Slot Compatibility - Fits the complete range of JSP Safety Helmets also compatible with the JSP Surefit™ Visor system for maximum protection.

### Deluxe Chin Strap with Chin Cup

CODE: **AHV000-500-000**

Wide elastic chinstrap with chin cup releases automatically with forces between 150 and 250 Newtons.



- Adjustable Steel Arms - The wearer can tilt and adjust the position of the cup for optimum comfort and fit, also offering even distribution of pressure.

- Light, Low Profile Cups - The InterGP™ feature a low profile and lightweight design.

- Comfort - Thick, wide and soft cushions provide comfort for prolonged use.

- SNR = 25DB - For general purpose hearing protection.



### Sweatband for EVO® Range

CODE: **AJA840-000-200**

Egyptian cotton core with porous PU coating for maximum sweat absorption. PH neutral, dermatologically tested.



### Evo 2/3 Reflectivity Kit

CODE: **AHV391-002-900**

This kit allows you to add extra visibility to your head protection. CR2™ is highly reflective offering on average 60% more reflectivity than standard reflective clothing material.

Colours Available:



Green Orange Red Silver Yellow First Aid



# Head Protection



## Hard Caps

### HardCap A1+™

CODE:

**ABS000-002-100 with Short Peak (5cm)**

**ABT000-001-100 with Micro Peak (2.5cm) (Minimum Order 20)**

The new HardCap A1+™ is another major innovation from JSP in head protection design. Designed to exceed the most recent standards, EN812:1997+2001, years of thought and design iterations have been undertaken to develop a product that is unrivalled in both performance and style. Sleek and low profile, it's almost impossible to distinguish from a standard 'high street' baseball cap.

The unique angled adjuster designed to fit under the occipital bone at the rear of the skull means that one size really does fit all, particularly when combined with the castellated protective liner. The liner is removable, therefore the cap part is machine-washable for hygiene purposes. It has a terrytowel sweatband for added comfort and all colour-ways have subtle reflective piping for added visibility safety.

#### Short Peak Colours Available:

Black. Black/Grey. Black/Hi Vis Orange. Grey/Red. Red.

Hi Vis Orange. Hi Vis Yellow. Navy. Navy Blue/Yellow. Royal Blue/Yellow.

#### Micro Peak Colours Available:

Black. Black/Grey. Black/Hi Vis Orange. Grey/Red. Grey/Red with reflective peak. Hi Vis Orange. Navy.



Short Peak (5cm) shown above



## Baseball Cap

### Martcare® Standard Top Cap™ with Standard Peak Top Cap™

CODE: **ABG000-000-500**

Sporty protective bump cap designed as a safeguard against accidental bumping or scraping of the head. Protective baseball cap style bump cap increases wearer acceptability. The Top Cap is available in 8 stylish colours.

The low dome profile of the cap allows it to be worn with other JSP Safety Protection such as Ear plugs, Spectacles, Goggles and Respiratory Masks.

Fully conforms to latest 2001 release of EN812 (Improved head protection).

#### Colours Available:

Navy

### BRANDING ON BASEBALL BUMP CAPS

We offer a fast and efficient branding service giving a high quality finish and a durable logo to the Baseball Bump Cap.

Please contact our sales team for further details.

# Head Protection



OXFORD, ENGLAND

**EVOLite® Forester - Deluxe Forestry and Landscaping Kit**  
CODE: [AJA242-560-800](#)

The EVOLite® Forester is a kit combining our EVOLite® safety helmet and an assembly of accessories making it perfect for landscaping and forestry work.

**Head Protection**

EVOLite® is an EN 397 safety helmet that combines strength with a lightweight ABS shell making it the perfect base for the forestry unit. The safety helmet also features our 4 point mounted linesman chinstrap and Revolution® wheel ratchet 6 point harness offering one of the most comfortable and the most secure fitting safety helmet on the market. We have also included our class 2 reflective CR2™ kit increasing worker visibility.

**Hearing Protection**

The EVOLite® Forester comes

equipped with our InterEXV™ helmet mounted ear defenders.

These ear defenders are designed to work in very noisy environments with an SNR of 28. Perfect for loud machinery such as chainsaws and woodchippers. Extreme protection for an extreme environment. Conforms to EN 352-3.

**Eye & Face Protection**

Eye protection is important in an environment where stray branches may be hanging and wood chips are flying, this is why we have included our tightly knit and robust Surefit™ Mesh Visor. This large 20cm visor offers protection from particles traveling at 12m/s and conforms to EN 1731 1.S

**Neck Protection**

Included in the forester kit is a



hi-visibility neck cape to protect the wearer from the sun and the rain. As well as extra visibility the neck cape offers UV50 protection.

**MK7® Forestry Safety Helmet (EN397)**  
CODE: [AHM124-600-800](#)

Forestry Helmet - a popular combination helmet comprising of: orange MK7 helmet with slip ratchet complete with Surefit visor carrier, 20cm wire gauze visor and Contour ear defenders. SNr+26. Conforms to EN397, EN50365, EN352-3 and EN1737.



**Bourton™ Bump Cap Standard**  
CODE: [ABA010-000-100](#)



Lightweight polyethylene shell with polyethylene or terylene harness. Conforms to EN812. Polyethylene harnessed Bourton™ is ideal for use in the food processing industry, being very easy to clean.



01 white 02 yellow 03 green 05 blue 06 red





# Head Protection

**CENTURION**

## Helmets & Accessories



**CONCEPT**  
 Reduced Peak Vented **S08F**  
 Reduced Peak **S08F**  
 Full Peak Vented **S09F**  
 Full Peak **S09A**  
 As above - Hi Viz **S08/09HV**

EN397, 1000V ac, LD, MM, -40C, Size 51-63cm  
 EN50365 ANSI/ISEA Z89. 1-2009 Type 1 Class C\* (Class C\* - unvented shell only)



↑ **AEGEAN ear defenders**  
 Fits Concept/1100 Classic  
**S42C**

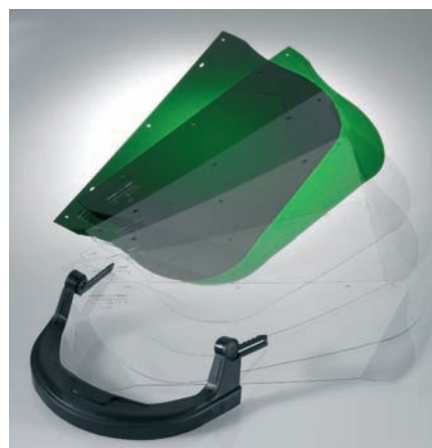


**BUMP CAP**  
**S19**

EN812: 1997, -30C, 440v ac, F.  
 Size 54-59cm



**1100 CLASSIC Full Peak**  
**SO1A**  
 EN397, 440V ac, LD, MM, -10C,  
 Size 51-63cm



**CHINSTRAP**  
**S30E**

**SCREEN CARRIER**  
 Fits Concept /1100 Classic  
 Pack 10  
**S54**



← **BALTIC ear defenders**  
 Fits Concept/  
 1100 Classic  
**S41C**



↑ **FACE SCREENS** Fits Concept/1100 Classic

<b>S580</b>	170mm Polycarbonate Clear	Pack 10
<b>S590</b>	225mm Polycarbonate Clear	Pack 10
<b>S591</b>	225mm Acetate Clear	Pack 10
<b>S592</b>	225mm Acetate Antifog	Pack 10
<b>S593</b>	225mm Acetate Green (EN 169 3)	Pack 5
<b>S595</b>	225mm Acetate Green (EN 169 5)	Pack 5